

ST. PAUL'S LUTHERAN "BLUE" CHURCH

5900 Applebutter Hill Rd. Coopersburg, Pa 18036
610-965-9500 e-mail: bluechch@ptd.net Website: stpaulscoopersburg.com
Interim Pastor: Rev. James Hammond 610-437-1960; jjtrev1@verizon.net

Thanksgiving Service ✕ November 18, 2018

**PRELUDE – "COME, YE THANKFUL PEOPLE, COME" – KYLE HILL
ANNOUNCEMENTS**

CONFESSION & FORGIVENESS

Blessed be the Holy Trinity, ✕ one God, who calls us into an everlasting hope, who guides us to springs of the water of life, who enlightens us with the spirit of wisdom. **Amen**

One with the communion of saints in all times and places, let us confess our sin against God and one another.

Silence for reflection

O God, our merciful redeemer,
we confess the ways we live only for ourselves. We fail to see you in our neighbor's face. We turn our ears from voices that cry out. We pass by the hungry and the oppressed. In your great mercy, forgive our sin and strengthen us for service to all in need; through Jesus Christ our Lord. Amen.

In the mercy of almighty God, Jesus Christ was given to die for you, and for ✕ his sake, God forgives you all your sin. Blessed are you! Rejoice and be glad, beloved people of God. **Amen.**

HYMN #693 "COME, YE THANKFUL PEOPLE, COME"

GREETING

P: The grace of our LORD Jesus Christ, the love of God, and the communion of the Holy Spirit be with you all.

C: And also with you.

HYMN OF PRAISE



PRAYER OF THE DAY

P: The LORD be with you. **C: And also with you.**

P: Let us pray...Almighty God our Father, your generous goodness comes to us new every day. By the work of your Spirit lead us to acknowledge your goodness, give thanks for your benefits, and serve you in willing obedience, through Jesus Christ, our Savior and LORD. **Amen.**

FIRST LESSON:

JOEL 2:21-27

PSALM 126

Sung responsively

Psalm Tone 4



¹When the LORD restored the for- | tunes of Zion,
then were we like | those who dream.

²**Then was our mouth filled with laughter,
and our tongue with | shouts of joy.**

**Then they said among the nations,
"The LORD has done great | things for them."**

³The LORD has done great | things for us,
and we are | glad indeed.

⁴**Restore our for- | tunes, O LORD,
like the watercourses | of the Negeb.**

⁵Those who | sowed with tears
will reap with | songs of joy.

⁶**Those who go out weeping, carry- | ing the seed,
will come again with joy, shoulder- | ing their sheaves.**

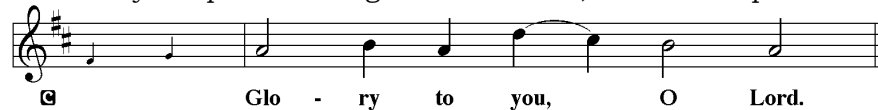
SECOND LESSON:

1 TIMOTHY 2:1-7

VERSE



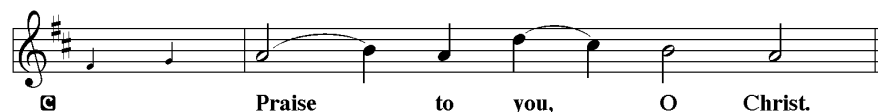
L: The Holy Gospel according to St. Matthew, the 6th Chapter.



THE HOLY GOSPEL:

MATTHEW 6:25-33

L: The Gospel of the LORD.



SERMON

HYMN #858 "PRAISE TO THE LORD, THE ALMIGHTY"

APOSTLES' CREED

**I believe in God, the Father almighty,
creator of heaven and earth.**

I believe in Jesus Christ, his only Son, our LORD.

**He was conceived by the power of the Holy Spirit and
born of the virgin Mary. He suffered under Pontius Pilate,
was crucified, died, and was buried. He descended into
hell. On the third day he rose again. He ascended into
heaven, and is seated at the right hand of the Father.
He will come again to judge the living and the dead.**

**I believe in the Holy Spirit, the holy catholic Church,
the communion of saints, the forgiveness of sins,
the resurrection of the body, and the life everlasting.
Amen.**

THE PRAYERS

Response : hear our prayer.

SHARING OF THE PEACE

P: The peace of the LORD be with you always.

C: And also with you.

OFFERING — "THANKS BE TO GOD" — SHELDON CURRY

Offering is gathered for the poor and those with needs in our community and world.

OFFERTORY RESPONSE #884

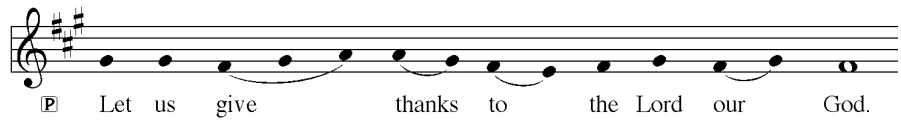
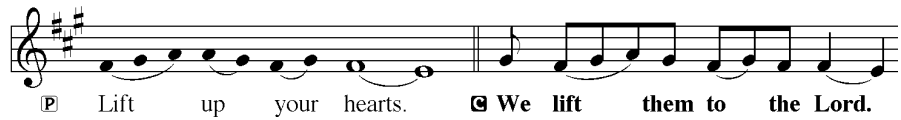
*Praise God, from whom all blessings flow,
praise him, all creatures here below;
praise him above, ye heav'nly host;
praise Father, Son, and Holy Ghost.*

OFFERTORY PRAYER

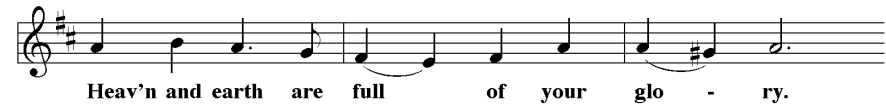
A: Let us pray... Creator God,

**C: you made everything and you provide for every need. The
bread we break and the wine we pour come from you. As we eat
and drink with thanksgiving, fill us with your love; let that love
flow through us to others; and join us to the saints before us in a
holy and boundless communion; through Jesus Christ our Lord.
Amen.**

THE GREAT THANKSGIVING



It is indeed right and salutary...we praise your name and join unending hymn:



EUCCHARISTIC PRAYER *The pastor offers the prayer.*

LORD'S PRAYER

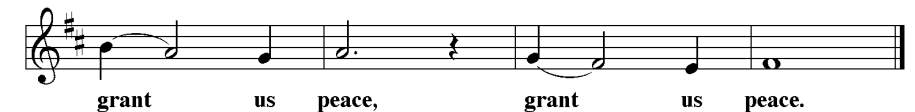
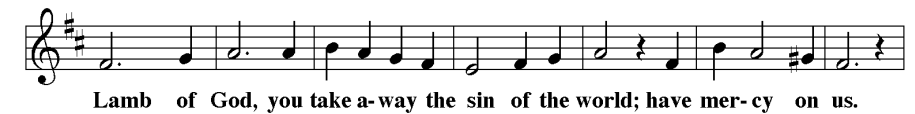
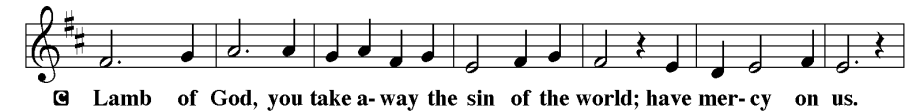
**Our Father, who art in heaven, hallowed be thy name,
thy kingdom come, thy will be done,
on earth as it is in heaven.
Give us this day our daily bread;
and forgive us our trespasses,**

**as we forgive those who trespass against us;
and lead us not into temptation,
but deliver us from evil.
For thine is the kingdom,
and the power, and the glory,
forever and ever. Amen**

INVITATION TO HOLY COMMUNION

Hunger no more. Thirst no more. Come to the banquet of life.

LAMB OF GOD



HOLY COMMUNION HYMN: #624 "JESUS, STILL LEAD ON"

BLESSING

The Body and Blood of our LORD Jesus Christ strengthen you and keep you in his grace. **Amen.**

PRAYER

Let us pray...Sovereign God, in this meal you give us a foretaste of the great feast to come. Keep us faithful to you, that we, with all your saints, may at length celebrate the marriage feast of the Lamb, Jesus Christ our Lord. **Amen.**

BENEDICTION

The love of God surround you; the grace of ✠ Christ release you; and the Holy Spirit be your guide and strength, now and forevermore. **Amen.**

HYMN #839 – “NOW THANK WE ALL OUR GOD”

DISMISSAL

Led on by the saints before us, go in peace to serve the Lord.

Thanks be to God.

POSTLUDE - “THIS IS MY FATHER’S WORLD” – DAVID HUNTSINGER



Liturgical music reprinted from **Lutheran Book of Worship**, © 1978. Used by permission of Augsburg-Fortress, license #15175-L. All rights reserved. Copying of any music in this bulletin prohibited without written permission. Psalm 126 is reprinted from *Psalter for Worship Year B* copyright 2008 Augsburg Fortress. May be reproduced by permission for local use only.

WELCOME TO ALL IN THE NAME OF OUR LORD JESUS CHRIST!

We especially welcome those who are visiting. We invite you to sign our guest register in the narthex. Blank envelopes in the pews are for visitors.

“God’s purpose for St. Paul’s Lutheran Blue” Church is to spread the Good News of Christ’s love for all people in the Southern Lehigh community and beyond. –Blue Church Mission Statement, adopted 2012

THANKSGIVING: *Today’s readings reflect two of the strains that go into the celebration of a national day of thanksgiving: gratitude for abundant harvest (Joel) and civic prayer for a peaceable common life (1 Timothy). The core meaning of Thanksgiving for many of us—a home feast for extended family and friends—is not reflected in the readings; but it is reflected weekly in the church’s meal of thanksgiving (eucharist). What we wish for both these thanksgiving meals is that they will go deeper than celebration of one another and our own blessings, to recognize in our true Host one who wants everyone brought to the table.*

ABOUT THE SCRIPTURE READINGS.....

JOEL 2:21-27: *The prophet Joel understood that a locust plague that ravaged the land of Judah was God’s judgment on the people, whom he then called to repentance. Today’s reading points beyond the judgment to a time when the Lord will bless the land and cause it to produce food in abundance.*

1 TIMOTHY 2:1-7: *Christians are encouraged to offer prayers and thanks for all people, including rulers (who were pagans rather than Christians). We offer such inclusive, far-reaching prayers because God desires to save all people.*

MATTHEW 6:25-33: *In the Sermon on the Mount, Jesus taught his disciples about the providence of God so that they would regard life with thanksgiving and trust rather than anxiety.*

PRAYER FOR THE WEEK: LORD Jesus, you call us to prepare for the last day. Give us strong faith, firm hope, and loving hearts. Amen.

PLEASE NOTE: - For those people wishing to take Holy Communion without wine, there are four cups in the center of the Communion tray with grape juice.

BLUE CHURCH PRAYS FOR....Sick/Recovering: Roman Denora, Robert Fulford, Joel Hammond, Hattie Smith, Maureen Swanson, Irmi, Dan, Deb

Note: This is a short-term list, for those who are in “acute care” situations—hospitalized or in recovery, dying, facing the recent death of a loved one, or presently facing a severe life crisis. The names of those for whom we pray will be kept on the list for one month. If you wish to have them placed back on the list please contact the church office.

LEADING OUR WORSHIP

CELEBRANT	The Rev. James Hammond
ORGANIST	Dr. Jennifer Dodd
GREETER	Shirley Hildebrand
ASSISTING MINISTER	Ron Fried
LECTOR	Lorraine Kline
CANTOR	Gwen Gibiser
USHERS	Anne Nichols, Diane Wirth
CHURCH COUNCIL REP	Roger Knappenberger
ALTAR FLOWER DELIVERY	Diane Wirth

CONGREGATIONAL BULLETIN BOARD

TODAY:	9:00 AM Choir Rehearsal. 9:30 AM Christian Education. 10:30 AM Worship. 6 PM Confirmation Class.
WED.:	9 AM Quilting. 4 PM Altar Care Committee Meeting.
THURS.:	THANKSGIVING DAY.
NEXT SUN.:	9 AM Choir Rehearsal. 9:30 AM Christian Education. 10:30 AM WORSHIP.

COMING EVENTS - mark your calendar!

DEC. 2 – 10:30 AM – 1ST Sunday of Advent.

DEC. 15 – 4 PM St. Lucia Fest Program at Blue Church.
(Snow Date – Dec. 16)

WEEKLY GIFTS, PRESENTED TO THE GLORY OF GOD:

ALTAR FLOWERS...by Diane Wirth.

BULLETINS...by Beverly and Richard Lerch in memory of Loved Ones.

SANCTUARY LAMP...Dean and Deb Stover in honor of Granddaughter Veronica's Birthday.

COMMUNION BREAD & WINE...by Deb & Dean Stover

THE COAT DRIVE IS ONCE AGAIN UNDER WAY. Don't throw out your old coats. Blue Church is collecting gently used coats to help those who can use them for the upcoming winter season. The collection of coats will continue through the Christmas season. You can bring in coats for drop off in the bin in the narthex.

VOLUNTEERS ARE NEEDED FOR BETTY LOU'S PANTRY DISTRIBUTION TWO SATURDAYS IN DECEMBER. They are December 8th and December 22nd from 8:30 AM – 11:30 AM. A sign-up sheet is on the Bulletin Board in the Narthex.

THE LEHIGH MISSION DISTRICT CHRISTMAS INGATHERING is continuing this year to brighten the holy season of Christmas for our Christian brothers and sisters who have special needs. There will be a box in the Narthex to collect the items. Please check the flyer for the list of items needed. Also note that Blue Church will need to provide 10 individual wrapped gifts for names that will be provided to us. Index cards with the information on it will be available so that people can take them and provide the gift

As in the past, we are now accepting monetary contributions for Christmas for a family or families in the Southern Lehigh community through Betty Lou's Food Pantry. Contributions will be accepted until Sunday, December 2, 2018.

If you would like credit for your monetary contribution at Blue Church, be sure to write your name on the front of the envelope. The envelopes are located on the table in the narthex next to a basket in which to place your contribution. Let's help make this family's holidays a joyous one. We thank you again for your support. Christian Action Team.

Stewardship Snippet

Nov. 18, 2018

Psalm 16:11 – You show me the path of life. In your presence there is fullness of joy; in your right hand are pleasures forevermore.

As we grow in spiritual maturity, steward/disciples learn ever more deeply the difference between the fleeting, shallow happiness the world offers and the rich, satisfying joy and pleasures of our life in God.

Please consider the Simply Giving Program in your stewardship giving to the Church. The program offers a secure electronic payment solution that allows you to make regular offerings. Sign up is easy. Simply fill out a form located in the narthex and return it to the church office. Any questions, contact Kathy Exner.

BLUE CHURCH FINANCIAL SUMMARY

	<u>OCT.</u>	<u>YEAR TO DATE</u>
RECEIPTS	\$ 8,538.05	\$ 69,703.68
EXPENSES	\$11,745.97	\$133,803.29
(DEFICIT)	(\$ 3,207.92)	(\$64,099.61)

ENDOWMENT FUND WITHDRAWN TO COVER EXPENSES	\$4,500.00	\$45,000.00
ENDOWMENT FUND INTEREST/REFUND	\$ 8,107.68	

HELP BLUE CHURCH BY SHOPPING AT AmazonSmile. Each time you do Amazon will donate 0.5% of the amount of the purchase. Each quarter Blue Church will then receive a check. Pick up an information sheet on the table in the Narthex.